

AUXILIARY CONTROLS | ORION SERIES | BLACK LINE

AUXILIARY CONTROLS | ORION SERIES | BLACK LINE

PUSH BUTTONS Ø22 | WITH COLOUR CAP | IP65



TYPE	COLOUR INDEX	CODE	WEIGHT grams	MIN. PACK QUANTITY	SIZES
FLUSH PUSH BUTTON	■	PPRN1BL	30	10	
	■	PPRN2BL	30	10	
	■	PPRN3BL	30	10	
	■	PPRN4BL	30	10	
	■	PPRN5BL	30	10	
	■	PPRN8BL	30	10	



TYPE	COLOUR INDEX	CODE	WEIGHT grams	MIN. PACK QUANTITY	SIZES
EXTENDED PUSH BUTTON	■	PPSN1BL	31	10	
	■	PPSN2BL	31	10	
	■	PPSN3BL	31	10	
	■	PPSN4BL	31	10	
	■	PPSN5BL	31	10	
	■	PPSN8BL	31	10	



TYPE	COLOUR INDEX	CODE	WEIGHT grams	MIN. PACK QUANTITY	SIZES
MUSHROOM Ø40	■	PPFN1M4NBL	45	10	
	■	PPFN2M4NBL	45	10	
	■	PPFN3M4NBL	45	10	

PUSH BUTTONS Ø22 | WITH LENS CAP | IP65



TYPE	COLOUR INDEX	CODE	WEIGHT grams	MIN. PACK QUANTITY	SIZES
FLUSH PUSH BUTTON	■	PPRL1BL	30	10	
	■	PPRL2BL	30	10	
	■	PPRL3BL	30	10	
	■	PPRL4BL	30	10	
	■	PPRL5BL	30	10	



TYPE	COLOUR INDEX	CODE	WEIGHT grams	MIN. PACK QUANTITY	SIZES
EXTENDED PUSH BUTTON	■	PPSL1BL	31	10	
	■	PPSL2BL	31	10	
	■	PPSL3BL	31	10	
	■	PPSL4BL	31	10	
	■	PPSL5BL	31	10	



TYPE	COLOUR INDEX	CODE	WEIGHT grams	MIN. PACK QUANTITY	SIZES
MUSHROOM OPERATOR Ø40	■	PPFL1M4NBL	43	10	

IND. LIGHT



TYPE	COLOUR INDEX	CODE	WEIGHT grams	MIN. PACK QUANTITY	SIZES
FLAT CAP	■	PLSL1NL	30	10	
	■	PLSL2NL	30	10	
	■	PLSL3NL	30	10	
	■	PLSL4NL	30	10	
	■	PLSL5NL	30	10	

MULTIFUNCTION PUSH BUTTONS Ø22 | NOT LIGHT | IP65



TYPE	COLOUR INDEX	CODE	WEIGHT grams	MIN. PACK QUANTITY	SIZES
DUAL PUSH BUTTON	■	PPDNBL	38	10	



TYPE	COLOUR INDEX	CODE	WEIGHT grams	MIN. PACK QUANTITY	SIZES
EXTENDED DUAL PUSH BUTTON	■	PPDNSBL	38	10	



TYPE	COLOUR INDEX	CODE	WEIGHT grams	MIN. PACK QUANTITY	SIZES
MULTIFUNCTION PUSH BUTTON	■	PPMNSBL	40	10	

MULTIFUNCTION PUSH BUTTONS Ø22 | LIGHT | IP65



TYPE	COLOUR INDEX	CODE	WEIGHT grams	MIN. PACK QUANTITY	SIZES
DUAL PUSH BUTTON	■	PPDLBL	38	10	
	■	PPDLBL.1	38	10	



TYPE	COLOUR INDEX	CODE	WEIGHT grams	MIN. PACK QUANTITY	SIZES
EXTENDED DUAL PUSH BUTTON	■	PPDLSBL	38	10	

MOMENTARY

MOMENTARY

ROTARY SWITCHES Ø22 | IP65

WITH OPERATOR

WITH LIGHT OPERATOR

WITH KEY



POSITION	COLOUR INDEX	CODE	COLOUR INDEX	CODE	KEY REMOVAL			CODE
					L	O	R	
 90°	■	PSMB1D0BL	■	PSML1D0BL		*		PSCR8D0CBL
	■	PSMB2D0BL	■	PSML2D0BL			*	PSCR8D0ECL
	■	PSMB3D0BL	■	PSML3D0BL			*	PSCR8D0NBL
	■	PSMB4D0BL	■	PSML4D0BL				
	■	PSMB5D0BL	■	PSML5D0BL				
	■	PSMB8D0BL	■	PSML8D0BL				
 45°	■	PSMB1D1BL	■	PSML1D1BL		*		PSCR8D1CBL
	■	PSMB2D1BL	■	PSML2D1BL			*	PSCR8D1ECL
	■	PSMB3D1BL	■	PSML3D1BL			*	PSCR8D1NBL
	■	PSMB4D1BL	■	PSML4D1BL				
	■	PSMB5D1BL	■	PSML5D1BL				
	■	PSMB8D1BL	■	PSML8D1BL				
 45°	■	PSMB1D2BL	■	PSML1D2BL			*	PSCR8D2CBL
	■	PSMB2D2BL	■	PSML2D2BL				
	■	PSMB3D2BL	■	PSML3D2BL				
	■	PSMB4D2BL	■	PSML4D2BL				
	■	PSMB5D2BL	■	PSML5D2BL				
	■	PSMB8D2BL	■	PSML8D2BL				
 45°	■	PSMB1T0BL	■	PSML1T0BL	*	*		PSCR8T0CBL
	■	PSMB2T0BL	■	PSML2T0BL	*	*	*	PSCR8T0ABL
	■	PSMB3T0BL	■	PSML3T0BL	*	*	*	PSCR8T0ECL
	■	PSMB4T0BL	■	PSML4T0BL	*	*	*	PSCR8T0GCL
	■	PSMB5T0BL	■	PSML5T0BL	*	*	*	PSCR8T0HCL
	■	PSMB8T0BL	■	PSML8T0BL	*	*	*	PSCR8T0KCL
 45°	■	PSMB1T3BL	■	PSML1T3BL			*	PSCR8T3CBL
	■	PSMB2T3BL	■	PSML2T3BL				
	■	PSMB3T3BL	■	PSML3T3BL				
	■	PSMB4T3BL	■	PSML4T3BL				
	■	PSMB5T3BL	■	PSML5T3BL				
	■	PSMB8T3BL	■	PSML8T3BL				
 45°	■	PSMB1T2BL	■	PSML1T2BL		*		PSCR8T2CBL
	■	PSMB2T2BL	■	PSML2T2BL			*	PSCR8T2ABL
	■	PSMB3T2BL	■	PSML3T2BL			*	PSCR8T2HCL
	■	PSMB4T2BL	■	PSML4T2BL				
	■	PSMB5T2BL	■	PSML5T2BL				
	■	PSMB8T2BL	■	PSML8T2BL				
 45°	■	PSMB1T1BL	■	PSML1T1BL		*		PSCR8T1CBL
	■	PSMB2T1BL	■	PSML2T1BL			*	PSCR8T1ECL
	■	PSMB3T1BL	■	PSML3T1BL			*	PSCR8T1NBL
	■	PSMB4T1BL	■	PSML4T1BL				
	■	PSMB5T1BL	■	PSML5T1BL				
	■	PSMB8T1BL	■	PSML8T1BL				

OPERATOR CAPS Ø22 | IP65

MOMENTARY FLUSH PUSH BUTTONS



SYMBOL	COLOUR	CODE	SYMBOL	COLOUR	CODE
	■	PPRN2BL/I		■	PPRN2BL/ON
	■	PPRN1BL/O		■	PPRN1BL/OFF
	■	PPRN2BL/II		■	PPRN5BL/F
	■	PPRN2BL/START		■	PPRN8BL/F
	■	PPRN1BL/STOP			

Available others symbols on request, also in different languages and colours.

1 For standard rotary switches suitable to operate a central contact, replace the letter "B" with the letter "C": PSMC
2 For rotary switches with Left - Right operating angles replace the letters "DO" with "SD": PSMB1DO or PSCR8SDE

* Key removable position

AUXILIARY CONTROLS | ORION SERIES | GREY LINE

AUXILIARY CONTROLS | ORION SERIES | GREY LINE

PUSH BUTTONS Ø22 | WITH COLOUR CAP | IP67-IP69K

MOMENTARY

TYPE	COLOUR INDEX	CODE	WEIGHT grams	MIN. PACK QUANTITY	SIZES
FLUSH PUSH BUTTON	■	PPRN1GL	30	10	
	■	PPRN2GL	30	10	
	■	PPRN3GL	30	10	
	■	PPRN4GL	30	10	
	■	PPRN5GL	30	10	
	■	PPRN8GL	30	10	

TYPE	COLOUR INDEX	CODE	WEIGHT grams	MIN. PACK QUANTITY	SIZES
EXTENDED PUSH BUTTON	■	PPSN1GL	31	10	
	■	PPSN2GL	31	10	
	■	PPSN3GL	31	10	
	■	PPSN4GL	31	10	
	■	PPSN5GL	31	10	
	■	PPSN8GL	31	10	

TYPE	COLOUR INDEX	CODE	WEIGHT grams	MIN. PACK QUANTITY	SIZES
MUSHROOM Ø40	■	PPFN1M4NGL	45	10	
	■	PPFN2M4NGL	45	10	
	■	PPFN3M4NGL	45	10	

PUSH BUTTONS Ø22 | WITH LENS CAP | IP67-IP69K

MOMENTARY

TYPE	COLOUR INDEX	CODE	WEIGHT grams	MIN. PACK QUANTITY	SIZES
FLUSH PUSH BUTTON	■	PPRL1GL	30	10	
	■	PPRL2GL	30	10	
	■	PPRL3GL	30	10	
	■	PPRL4GL	30	10	
	■	PPRL5GL	30	10	

TYPE	COLOUR INDEX	CODE	WEIGHT grams	MIN. PACK QUANTITY	SIZES
EXTENDED PUSH BUTTON	■	PPSL1GL	31	10	
	■	PPSL2GL	31	10	
	■	PPSL3GL	31	10	
	■	PPSL4GL	31	10	
	■	PPSL5GL	31	10	

TYPE	COLOUR INDEX	CODE	WEIGHT grams	MIN. PACK QUANTITY	SIZES
MUSHROOM OPERATOR Ø40	■	PPFL1M4NGL	43	10	

IND. LIGHT

TYPE	COLOUR INDEX	CODE	WEIGHT grams	MIN. PACK QUANTITY	SIZES
FLAT CAP	■	PLSL1NL	30	10	
	■	PLSL2NL	30	10	
	■	PLSL3NL	30	10	
	■	PLSL4NL	30	10	
	■	PLSL5NL	30	10	

MULTIFUNCTION PUSH BUTTONS Ø22 | NOT LIGHT | IP67-IP69K

TYPE	COLOUR INDEX	CODE	WEIGHT grams	MIN. PACK QUANTITY	SIZES
DUAL PUSH BUTTON	■	PPDNGL	38	10	

TYPE	COLOUR INDEX	CODE	WEIGHT grams	MIN. PACK QUANTITY	SIZES
EXTENDED DUAL PUSH BUTTON	■	PPDNSGL	38	10	

TYPE	COLOUR INDEX	CODE	WEIGHT grams	MIN. PACK QUANTITY	SIZES
MULTIFUNCTION PUSH BUTTON	■	PPMNSGL	40	10	

MULTIFUNCTION PUSH BUTTONS Ø22 | LIGHT | IP67-IP69K

TYPE	COLOUR INDEX	CODE	WEIGHT grams	MIN. PACK QUANTITY	SIZES
DUAL PUSH BUTTON	■	PPDLGL	38	10	
	■	PPDLGL.1	38	10	

TYPE	COLOUR INDEX	CODE	WEIGHT grams	MIN. PACK QUANTITY	SIZES
EXTENDED DUAL PUSH BUTTON	■	PPDLSGL	38	10	

ROTARY SWITCHES Ø22 | IP67-IP69K

WITH OPERATOR

WITH LIGHT OPERATOR

WITH KEY



POSITION	COLOUR INDEX	CODE	COLOUR INDEX	CODE	KEY REMOVAL			CODE
					L	O	R	
 90°	■	PSMB1D0GL	■	PSML1D0GL		*		PSCR8D0CGL
	■	PSMB2D0GL	■	PSML2D0GL			*	PSCR8D0EGL
	■	PSMB3D0GL	■	PSML3D0GL			*	PSCR8D0NGL
	■	PSMB4D0GL	■	PSML4D0GL			*	
	■	PSMB5D0GL	■	PSML5D0GL			*	
	■	PSMB8D0GL	■	PSML8D0GL			*	
 45°	■	PSMB1D1GL	■	PSML1D1GL		*		PSCR8D1CGL
	■	PSMB2D1GL	■	PSML2D1GL			*	PSCR8D1EGL
	■	PSMB3D1GL	■	PSML3D1GL			*	PSCR8D1NGL
	■	PSMB4D1GL	■	PSML4D1GL			*	
	■	PSMB5D1GL	■	PSML5D1GL			*	
	■	PSMB8D1GL	■	PSML8D1GL			*	
 45°	■	PSMB1D2GL	■	PSML1D2GL			*	PSCR8D2CGL
	■	PSMB2D2GL	■	PSML2D2GL			*	
	■	PSMB3D2GL	■	PSML3D2GL			*	
	■	PSMB4D2GL	■	PSML4D2GL			*	
	■	PSMB5D2GL	■	PSML5D2GL			*	
	■	PSMB8D2GL	■	PSML8D2GL			*	
 45°	■	PSMB1T0GL	■	PSML1T0GL	*	*		PSCR8T0CGL
	■	PSMB2T0GL	■	PSML2T0GL	*	*	*	PSCR8T0AGL
	■	PSMB3T0GL	■	PSML3T0GL	*	*	*	PSCR8T0EGL
	■	PSMB4T0GL	■	PSML4T0GL	*	*	*	PSCR8T0GGL
	■	PSMB5T0GL	■	PSML5T0GL	*	*	*	PSCR8T0HGL
	■	PSMB8T0GL	■	PSML8T0GL	*	*	*	PSCR8T0KGL
 45°	■	PSMB1T3GL	■	PSML1T3GL			*	PSCR8T3CGL
	■	PSMB2T3GL	■	PSML2T3GL			*	
	■	PSMB3T3GL	■	PSML3T3GL			*	
	■	PSMB4T3GL	■	PSML4T3GL			*	
	■	PSMB5T3GL	■	PSML5T3GL			*	
	■	PSMB8T3GL	■	PSML8T3GL			*	
 45°	■	PSMB1T2GL	■	PSML1T2GL		*		PSCR8T2CGL
	■	PSMB2T2GL	■	PSML2T2GL			*	PSCR8T2AGL
	■	PSMB3T2GL	■	PSML3T2GL			*	PSCR8T2HGL
	■	PSMB4T2GL	■	PSML4T2GL			*	
	■	PSMB5T2GL	■	PSML5T2GL			*	
	■	PSMB8T2GL	■	PSML8T2GL			*	
 45°	■	PSMB1T1GL	■	PSML1T1GL		*		PSCR8T1CGL
	■	PSMB2T1GL	■	PSML2T1GL			*	PSCR8T1EGL
	■	PSMB3T1GL	■	PSML3T1GL			*	PSCR8T1NGL
	■	PSMB4T1GL	■	PSML4T1GL			*	
	■	PSMB5T1GL	■	PSML5T1GL			*	
	■	PSMB8T1GL	■	PSML8T1GL			*	

1 For standard rotary switches suitable to operate a central contact, replace the letter "B" with the letter "C": PSMC
2 For rotary switches with Left - Right operating angles replace the letters "DO" with "SD": PSMB1DO or PSCR8SDE

* Key removable position

OPERATOR CAPS Ø22 | IP67-IP69K

MOMENTARY FLUSH PUSH BUTTONS



SYMBOL	COLOUR	CODE	SYMBOL	COLOUR	CODE
	■	PPRN2GL/I		■	PPRN2GL/ON
	■	PPRN1GL/O		■	PPRN1GL/OFF
	■	PPRN2GL/II		■	PPRN5GL/F
	■	PPRN2GL/START		■	PPRN8GL/F
	■	PPRN1GL/STOP			

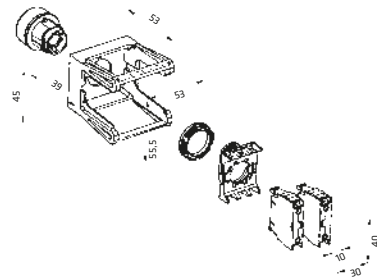
Available others symbols on request, also in different languages and colours.

ACCESSORIES | ORION SERIES

DIN RAIL MOUNTING ADAPTOR



DESCRIPTION	CODE
DIN EN50022 RAIL MOUNTING FOR 46 MM STANDARDISED GREY ENCLOSURES	11708351



PROTECTION CAPS

FOR FLUSH BUTTON

DESCRIPTION	CODE
ORION	PCRNL



FOR MULTIFUNCTIONAL SERIES

ORION	CODE
PPDNGL-PPDLGL	PCDNL
PPMNGL	PCMNL
PPDNRGL-PPDLRGL	PCNNL



FOR EXTENDED PUSH BUTTON

DESCRIPTION	CODE
ORION	PCSNL



CENTRAL CONTACT OPERATION



DESCRIPTION	CODE
FOR GL, BL, NEMA 4X SERIES	11708555

KEY FIXING BULB EXTRACTOR



CODE
PCF

STOPPER CLOSING HOLES Ø22,5



CODE
PTRN8

CONTACTS SUPPORT



DESCRIPTION	CODE	DESCRIPTION	CODE
TO CONTACT ELEMENTS PL, PCW, PSC	PPELN8	TO FIVE CONTACT ELEMENTS PL, PCW, PSC	PPELN8-5

FASTON CONNECTORS AND FOR PCB

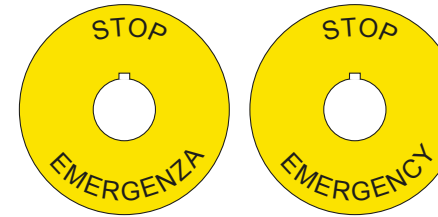


DESCRIPTION	CODE	DESCRIPTION	CODE
FASTON 6,3x0,8	11708341	PCB	11708235

TO SCREW CONTACTS PL

ACCESSORIES | ORION SERIES

EMERGENCY STOP RING



DESCRIPTION	TEXT	CODE
Ø60 Made of Aluminium Yellow background Black letters. Weight 3,5 gr. Min. packing q.ty 10 pcs.	(BLANK)	PTE
	STOP - EMERGENZA	PTE/I
	EMERGENCY - STOP	PTE/A
	NOT - AUS	PTE/D

Available others texts on request, also in different languages.

LEGEND PLATE



CODE
PPTN8

LABEL



TEXT	CODE
(BLANK)	PTA00
MARCIA	PTA01
ARRESTO	PTA02
I O II	PTA03
O I	PTA04
CHIUDE	PTA05
APRE	PTA06
EMERGENZA	PTA07
MANUALE	PTA08
AUTOMATICO	PTA09
AVANTI	PTA10
INDIETRO	PTA11
EIN	PTA12
AUS	PTA13
STOP	PTA14
START	PTA15
RESET	PTA16
I → 0 ← II	PTA17
AUT 0 MAN	PTA18
INS - DISINS	PTA26
HAND OFF AUTO	PTA27
FORW OFF REV	PTA28
ON OFF	PTA29

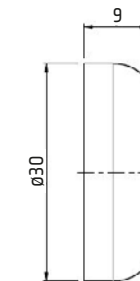
SPECIAL FRAMES ON REQUEST

• **SPECIAL FRAMES: NICKEL LINE**

The auxiliary controls of Grey Line of Orion Series can be supplied with seal in Nickel.

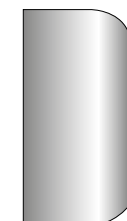
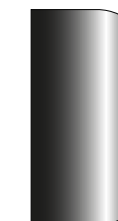
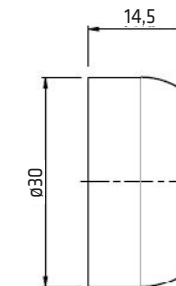
To order Nickel Execution replace the letters "GL" with "NL":

PPRN1GL (Grey Line) > PPRN1NL (Nickel Line)



• **SPECIAL FRAMES: SHROUDED Black Line / Grey Line**

The auxiliary controls of Orion Series are available also with shrouded seal.



Black Line
Orion Series

Grey Line
Orion Series

AUXILIARY CONTROLS | ORION SERIES

AUXILIARY CONTROLS | ORION SERIES

TECHNICAL DATA | ELECTRICAL CHARACTERISTICS

CONTACT BLOCKS

EC/EN 60947-5-1 CHARACTERISTICS		PL004001-PL004002	PCW01-PCW10 / PSC01-PSC10
Rated insulation voltage Ui	V	690*	690*
Rated impulse withstand voltage Uimp	kV	4*	4*
Operating frequency	Hz	50/60*	50/60*
Rated thermal current Ith	A	16*	16*
Rated thermal current in enclosed Ithe	A	10*	10*
RATED OPERATING CURRENT Ie:			
AC15: Alternate current	V	24 60 110 230 400 440 500 690	24 60 110 240 400 440 500 690
	A	16* 12 8 6 4,5 3,5 1* 1	16* 12 5 5* 4 4 4* 2*
DC13: Direct current	V	24 48 60 110 220	24 48 60 110 250
	A	2* 1,2 0,85 0,4 0,25*	2 2* 1* 0,4 0,4*
Conditional short circuit withstand current	A	1000*	1000*
Fuse rating gG	500V	10A*	10A*
Contact insulation resistance	mΩ	<25	<25
Switching mechanism		Slow break double gap contacts	Slow break double gap contacts
Contact duty		⊕ NC contact with positive opening	⊕ NC contact with positive opening
Minimum tripping force		4N	4N
Electrical life AC15	mil. cycles	1A/1,5 - 2A/0,5 - 3A/0,25	1A/1,5 - 2A/0,5 - 3A/0,25
UL 508 CHARACTERISTICS			
General Use		10A-600V ac - 2,5A-125V dc	10A-600V ac - 2,5A-125V dc
Heavy Duty (HD) category		A600-Q600	A600-Q600

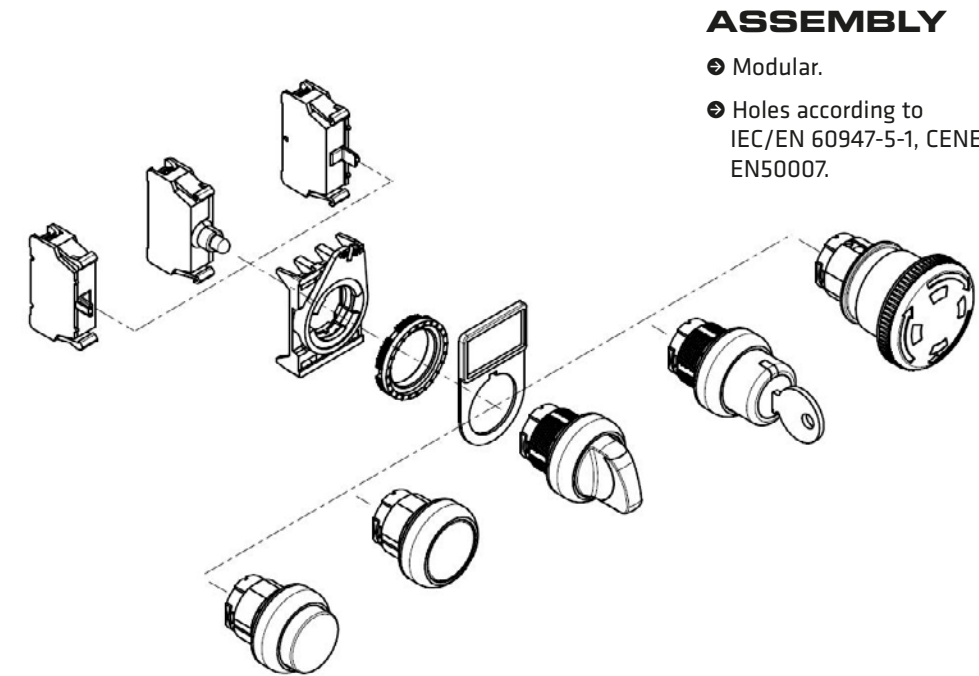
LAMP HOLDER

EC/EN 60947-5-1 CHARACTERISTICS		BUILT-IN LED
		LED PL004.L. PCW.L.-PSC.L.
Rated insulation voltage Ui	V	400
Rated operating voltage Ue	V	AC/DC 12-24
	V	AC/DC 48
	V	AC/DC 110
	V	AC 220
Max rated power	W	-
Power supply		-
Lamp fixing system		-

TECHNICAL DATA | ELECTRICAL CHARACTERISTICS

STANDARD CONFORMITY	UL - IMQ - R.I.N.A
Approvals	IEC/EN60947-5-1, UL508
Protection class	IP65: Buttons and switches, Multifunction push button IP66/IP67/IP69K: Buttons and switches, Multifunction push button
	Conforms to UL50 Type 1
Material Group	EN60947-1 II
Pollution Grade	EN60947-1 3
Flammability	UL94 VO: live parts
Ambient Temperature	°C Operating: -25 +70
	°C Storage: -30 +70
Climate Protection	IEC68 part 2-3 Hot damp
	IEC68 part 2-30 Unsettled Hot damp
Mechanical life:	
Mushroom operators and standard	mil./operations 3
Push buttons with colour cap	
Standard push buttons with lens cap	1
Standard rotary switches	1
Rotary switches with lens	0,5
Emergency stop push buttons with release	0,3

ASSEMBLY INSTRUCTIONS



ASSEMBLY

- ⊕ Modular.
- ⊕ Holes according to IEC/EN 60947-5-1, CENELEC EN50007.

CENELEC EN50007

- ⊕ Panel thickness from 1 up to 6 mm.

- ⊕ If not required, lock nuts can be easily removed by means of a screwdriver.

