

AUXILIARY CONTROLS | NEMA SERIES

AUXILIARY CONTROLS | NEMA SERIES

PUSH BUTTONS Ø22 | WITH COLOUR CAP | NEMA 4-4X

MOMENTARY



TYPE	COLOUR INDEX	CODE	WEIGHT grams	MIN. PACK QUANTITY	SIZES
FLUSH PUSH BUTTON	■	PPRN1GL4X	30	10	
	■	PPRN2GL4X	30	10	
	■	PPRN3GL4X	30	10	
	■	PPRN4GL4X	30	10	
	■	PPRN5GL4X	30	10	
	■	PPRN8GL4X	30	10	



TYPE	COLOUR INDEX	CODE	WEIGHT grams	MIN. PACK QUANTITY	SIZES
EXTENDED PUSH BUTTON	■	PPSN1GL4X	31	10	
	■	PPSN2GL4X	31	10	
	■	PPSN3GL4X	31	10	
	■	PPSN4GL4X	31	10	
	■	PPSN5GL4X	31	10	
	■	PPSN8GL4X	31	10	

PUSH BUTTONS Ø22 | WITH LENS CAP

MOMENTARY



TYPE	COLOUR INDEX	CODE	WEIGHT grams	MIN. PACK QUANTITY	SIZES
FLUSH PUSH BUTTON	■	PPRL1GL4X	30	10	
	■	PPRL2GL4X	30	10	
	■	PPRL3GL4X	30	10	
	■	PPRL4GL4X	30	10	
	■	PPRL5GL4X	30	10	



TYPE	COLOUR INDEX	CODE	WEIGHT grams	MIN. PACK QUANTITY	SIZES
EXTENDED PUSH BUTTON	■	PPSL1GL4X	31	10	
	■	PPSL2GL4X	31	10	
	■	PPSL3GL4X	31	10	
	■	PPSL4GL4X	31	10	
	■	PPSL5GL4X	31	10	

MULTIFUNCTION PUSH BUTTONS Ø22 | NOT LIGHT | NEMA 4-4X



TYPE	COLOUR INDEX	CODE	WEIGHT grams	MIN. PACK QUANTITY	SIZES
DUAL PUSH BUTTON	■	PPDNGL4X	38	10	



TYPE	COLOUR INDEX	CODE	WEIGHT grams	MIN. PACK QUANTITY	SIZES
EXTENDED DUAL PUSH BUTTON	■	PPDNSGL4X	38	10	



TYPE	COLOUR INDEX	CODE	WEIGHT grams	MIN. PACK QUANTITY	SIZES
MULTIFUNCTION PUSH BUTTON	■	PPMNSGL4X	40	10	

MULTIFUNCTION PUSH BUTTONS Ø22 | LIGHT | NEMA 4-4X



TYPE	COLOUR INDEX	CODE	WEIGHT grams	MIN. PACK QUANTITY	SIZES
DUAL PUSH BUTTON	■	PPDLGL4X	38	10	
	■	PPDLGL4X.1	38	10	



TYPE	COLOUR INDEX	CODE	WEIGHT grams	MIN. PACK QUANTITY	SIZES
EXTENDED DUAL PUSH BUTTON	■	PPDLSGL4X	38	10	

AUXILIARY CONTROLS | NEMA SERIES

AUXILIARY CONTROLS | NEMA SERIES

EMERGENCY PUSH BUTTONS Ø22 | EN ISO 13850 | NEMA 4-4X

	TYPE	COLOUR INDEX	CODE	WEIGHT grams	MIN. PACK QUANTITY	SIZES
	MUSHROOM OPERATOR Ø30 TWIST TO RELEASE	■	PPFN1R3N4X	42	10	

	TYPE	COLOUR INDEX	CODE	WEIGHT grams	MIN. PACK QUANTITY	SIZES
	MUSHROOM OPERATOR WITH VISION Ø30 TWIST TO RELEASE	■	PPFN1R3S4X	44	10	

EMERGENCY PUSH BUTTONS Ø22 | EN ISO 13850 | NEMA 4-4X

	TYPE	COLOUR INDEX	CODE	WEIGHT grams	MIN. PACK QUANTITY	SIZES
	MUSHROOM OPERATOR Ø40 TWIST TO RELEASE	■	PPFN1R4N4X	44	10	

	TYPE	COLOUR INDEX	CODE	WEIGHT grams	MIN. PACK QUANTITY	SIZES
	MUSHROOM OPERATOR WITH VISION Ø40 TWIST TO RELEASE	■	PPFN1R4S4X	46	10	

	TYPE	COLOUR INDEX	CODE	WEIGHT grams	MIN. PACK QUANTITY	SIZES
	MUSHROOM OPERATOR Ø40 WITH KEY RELEASE	■	PPFN1C4NX4X (not EN ISO 13850)	76	10	

	TYPE	COLOUR INDEX	CODE	WEIGHT grams	MIN. PACK QUANTITY	SIZES
	MUSHROOM OPERATOR Ø40 PUSH-PULL	■	PPFN1P4N4X	44	10	

	TYPE	COLOUR INDEX	CODE	WEIGHT grams	MIN. PACK QUANTITY	SIZES
	MUSHROOM OPERATOR Ø40 PUSH-PULL WITH VISION	■	PPFN1P4S4X	46	10	

TECHNICAL NOTES

- All operators comply with the relevant European and American standard.
- EN ISO 13850: Machine safety - Emergency stop operators, functional characteristics - Design guidelines.
- IEC/EN6097-5-1.
- Comply with the standard IEC/EN60204-1: Machine safety - Machine electrical circuits - General guidelines.
- The push buttons are designed with a load charge mechanism to ensure a reliable operation and stoppage, or blockage, in the activate position. The combination with positive switching NC contacts and the presence of the "status" indicator on some models, guarantee a high degree of reliability and effectiveness.

ROTARY SWITCHES Ø22 | NEMA 4-4X

WITH OPERATOR

WITH LIGHT OPERATOR

WITH KEY



POSITION	COLOUR INDEX	CODE	COLOUR INDEX	CODE	KEY REMOVAL			CODE
					L	O	R	
 90°	■	PSMB1D0GL4X	■	PSML1D0GL4X		*		PSCR8D0CGL4X
	■	PSMB2D0GL4X	■	PSML2D0GL4X			*	PSCR8D0EGL4X
	■	PSMB3D0GL4X	■	PSML3D0GL4X			*	PSCR8D0NGL4X
	■	PSMB4D0GL4X	■	PSML4D0GL4X			*	
	■	PSMB5D0GL4X	■	PSML5D0GL4X			*	
 45°	■	PSMB1D1GL4X	■	PSML1D1GL4X		*		PSCR8D1CGL4X
	■	PSMB2D1GL4X	■	PSML2D1GL4X			*	PSCR8D1EGL4X
	■	PSMB3D1GL4X	■	PSML3D1GL4X			*	PSCR8D1NGL4X
	■	PSMB4D1GL4X	■	PSML4D1GL4X			*	
	■	PSMB5D1GL4X	■	PSML5D1GL4X			*	
 45°	■	PSMB1D2GL4X	■	PSML1D2GL4X			*	PSCR8D2CGL4X
	■	PSMB2D2GL4X	■	PSML2D2GL4X			*	
	■	PSMB3D2GL4X	■	PSML3D2GL4X			*	
	■	PSMB4D2GL4X	■	PSML4D2GL4X			*	
	■	PSMB5D2GL4X	■	PSML5D2GL4X			*	
 45°	■	PSMB1T0GL4X	■	PSML1T0GL4X	*	*	*	PSCR8T0CGL4X
	■	PSMB2T0GL4X	■	PSML2T0GL4X	*	*	*	PSCR8T0AGL4X
	■	PSMB3T0GL4X	■	PSML3T0GL4X	*	*	*	PSCR8T0EGL4X
	■	PSMB4T0GL4X	■	PSML4T0GL4X	*	*	*	PSCR8T0GGL4X
	■	PSMB5T0GL4X	■	PSML5T0GL4X	*	*	*	PSCR8T0HGL4X
 45°	■	PSMB1T3GL4X	■	PSML1T3GL4X			*	PSCR8T3CGL4XL
	■	PSMB2T3GL4X	■	PSML2T3GL4X			*	
	■	PSMB3T3GL4X	■	PSML3T3GL4X			*	
	■	PSMB4T3GL4X	■	PSML4T3GL4X			*	
	■	PSMB5T3GL4X	■	PSML5T3GL4X			*	
 45°	■	PSMB1T2GL4X	■	PSML1T2GL4X		*		PSCR8T2CGL4X
	■	PSMB2T2GL4X	■	PSML2T2GL4X			*	PSCR8T2AGL4X
	■	PSMB3T2GL4X	■	PSML3T2GL4X			*	PSCR8T2HGL4X
	■	PSMB4T2GL4X	■	PSML4T2GL4X			*	
	■	PSMB5T2GL4X	■	PSML5T2GL4X			*	
 45°	■	PSMB1T1GL4X	■	PSML1T1GL4X		*		PSCR8T1CGL4X
	■	PSMB2T1GL4X	■	PSML2T1GL4X			*	PSCR8T1EGL4X
	■	PSMB3T1GL4X	■	PSML3T1GL4X			*	PSCR8T1NGL4X
	■	PSMB4T1GL4X	■	PSML4T1GL4X			*	
	■	PSMB5T1GL4X	■	PSML5T1GL4X			*	

1 For standard rotary switches suitable to operate a central contact, replace the letter "B" with the letter "C": PSMB1C0GL4X or PSML1C0GL4X
2 For rotary switches with Left - Right operating angles replace the letters "DO" with "SD": PSMB1SD0GL4X or PSML1SD0GL4X

* Key removable position

OPERATOR CAPS Ø22 | NEMA 4-4X

MOMENTARY FLUSH PUSH BUTTONS



SYMBOL	COLOUR	CODE	SYMBOL	COLOUR	CODE
	■	PPRN2GL4X/I		■	PPRN2GL4X/ON
	■	PPRN1GL4X/O		■	PPRN1GL4X/OFF
	■	PPRN2GL4X/II		■	PPRN5GL4X/F
	■	PPRN2GL4X/START		■	PPRN8GL4X/F
	■	PPRN1GL4X/STOP			

Available others symbols on request, also in different languages and colours.

ACCESSORIES | NEMA 4-4X

CENTRAL CONTACT OPERATION



DESCRIPTION	CODE
NEMA 4X SERIES	11708555

KEY FIXING BULB EXTRACTOR



CODE
PCF

CONTACTS SUPPORT



DESCRIPTION	CODE	DESCRIPTION	CODE
TO CONTACT ELEMENTS PL, PCW, PSC	PPELN8	TO FIVE CONTACT ELEMENTS PL, PCW, PSC	PPELN8-5

FASTON CONNECTORS AND FOR PCB



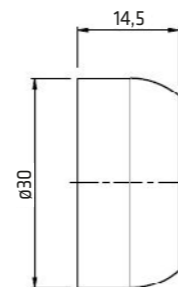
DESCRIPTION	CODE	DESCRIPTION	CODE
FASTON 6,3x0,8	11708341	PCB	11708235

TO SCREW CONTACTS PL

SPECIAL FRAMES ON REQUEST

• **SPECIAL FRAMES: SHROUDED NEMA**

The auxiliary controls of NEMA Series are available also with shrouded seal.



NEMA Series

TECHNICAL DATA | ELECTRICAL CHARACTERISTICS

CONTACT BLOCKS

EC/EN 60947-5-1 CHARACTERISTICS		PL004001-PL004002	PCW01-PCW10 / PSC01-PSC10
Rated insulation voltage Ui	V	690*	690*
Rated impulse withstand voltage Uimp	kV	4*	4*
Operating frequency	Hz	50/60*	50/60*
Rated thermal current Ith	A	16*	16*
Rated thermal current in enclosed Ithe	A	10*	10*
RATED OPERATING CURRENT Ie:		PL004001-PL004002	PCW01-PCW10 / PSC01-PSC10
AC15: Alternate current	V	24 60 110 230 400 440 500 690	24 60 110 240 400 440 500 690
	A	16* 12 8 6 4,5 3,5 1* 1	16* 12 5 5* 4 4 4* 2*
DC13: Direct current	V	24 48 60 110 220	24 48 60 110 250
	A	2* 1,2 0,85 0,4 0,25*	2 2* 1* 0,4 0,4*
Conditional short circuit withstand current	A	1000*	1000*
Fuse rating gG	500V	10A*	10A*
Contact insulation resistance	mΩ	<25	<25
Switching mechanism		Slow break double gap contacts	Slow break double gap contacts
Contact duty		⊕ NC contact with positive opening	⊕ NC contact with positive opening
Minimum tripping force		4N	4N
Electrical life AC15	mil. cycles	1A/1,5 - 2A/0,5 - 3A/0,25	1A/1,5 - 2A/0,5 - 3A/0,25
UL 508 CHARACTERISTICS		PL004001-PL004002	PCW01-PCW10 / PSC01-PSC10
General Use		10A-600V ac - 2,5A-125V dc	10A-600V ac - 2,5A-125V dc
Heavy Duty (HD) category		A600-Q600	A600-Q600

LAMP HOLDER

EC/EN 60947-5-1 CHARACTERISTICS		BUILT-IN LED
Rated insulation voltage Ui	V	400
Rated operating voltage Ue	V	AC/DC 12-24
	V	AC/DC 48
	V	AC/DC 110
	V	AC 220
Max rated power	W	-
Power supply		-
Lamp fixing system		-

TECHNICAL DATA | ELECTRICAL CHARACTERISTICS

STANDARD CONFORMITY	UL
Approvals	UL508, CSA 22.2
Protection class	Buttons and switches, Multifunction push button
	Emergency push buttons EN ISO 13850
	Type 1-4-4X
Material Group	II
Pollution Grade	3
Ambient Temperature	Operating: -25 +70
	Storage: -30 +70
Climate Protection	Hot damp
	Unsettled Hot damp
Mechanical life:	
Push buttons with colour cap	3
Standard push buttons with lens cap	1
Standard rotary switches	1
Rotary switches with lens	0,5
Emergency stop push buttons with release	0,3

