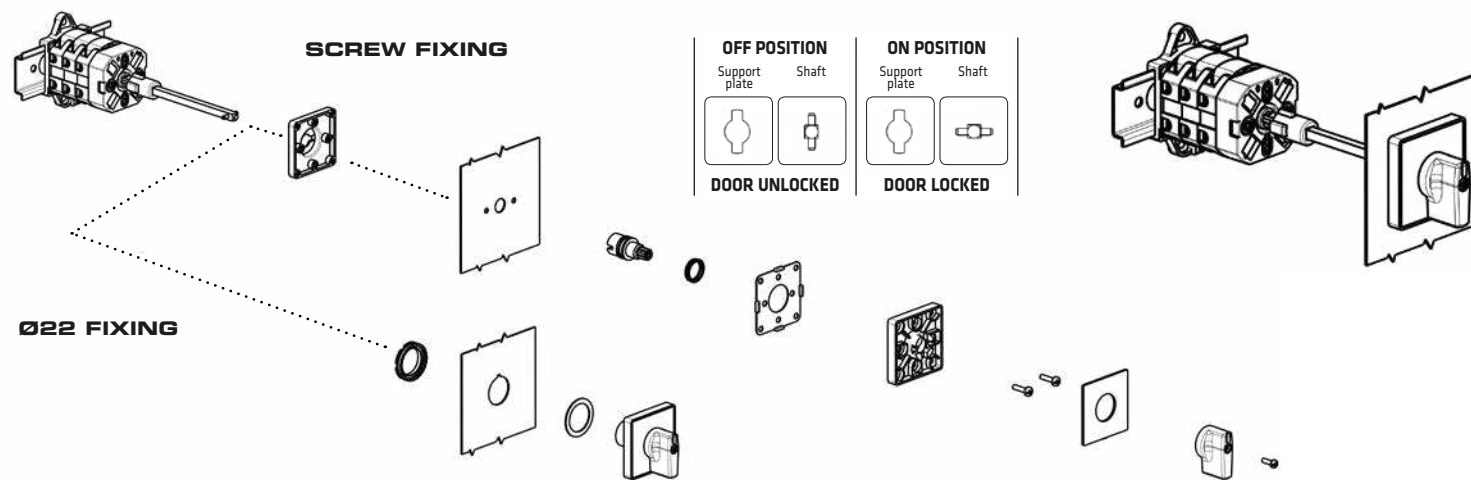
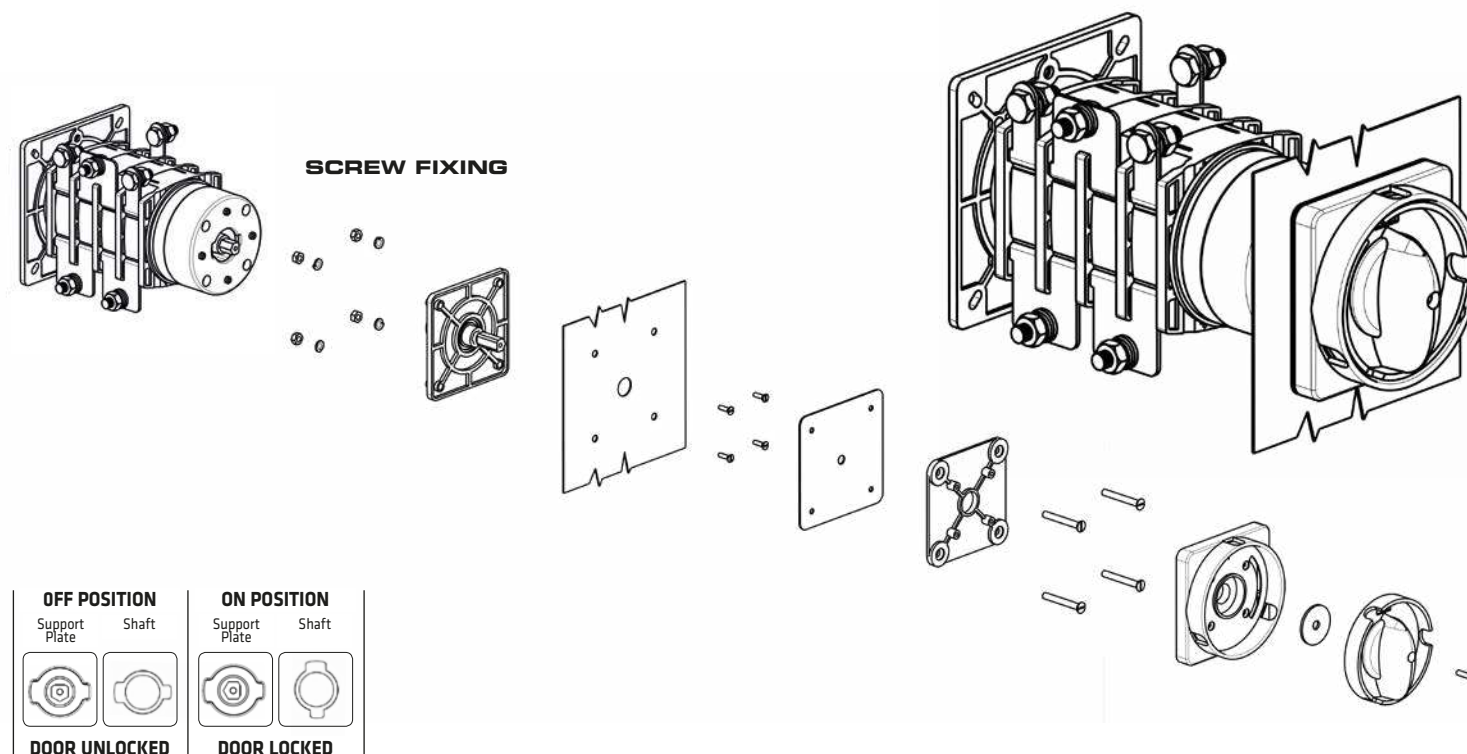


**B** **BASE MOUNTING**

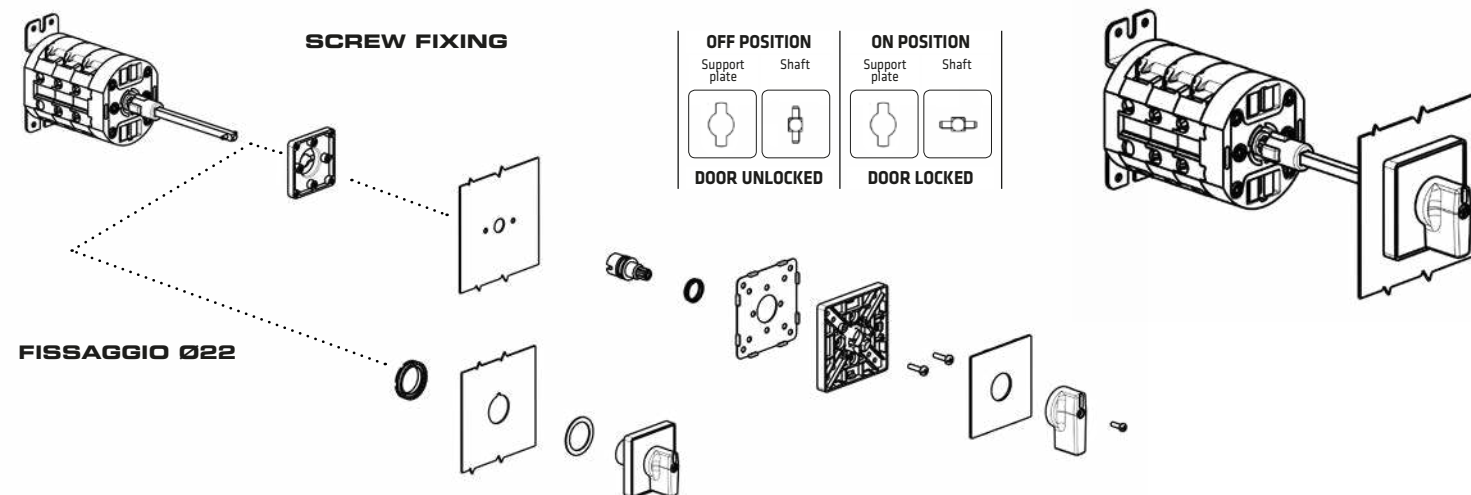
| RANGE AC21A | 12A - 16A - 20A |



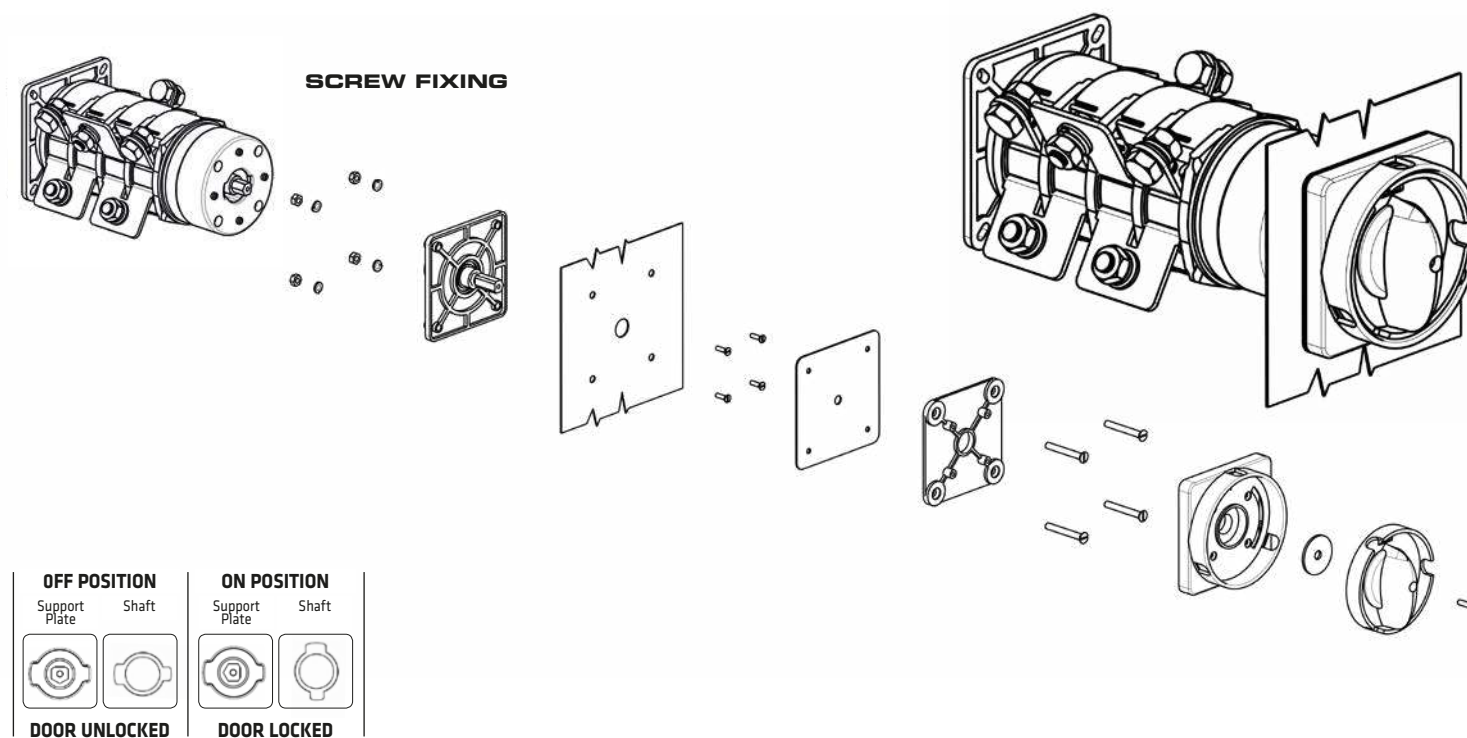
| RANGE AC21A | 125A |



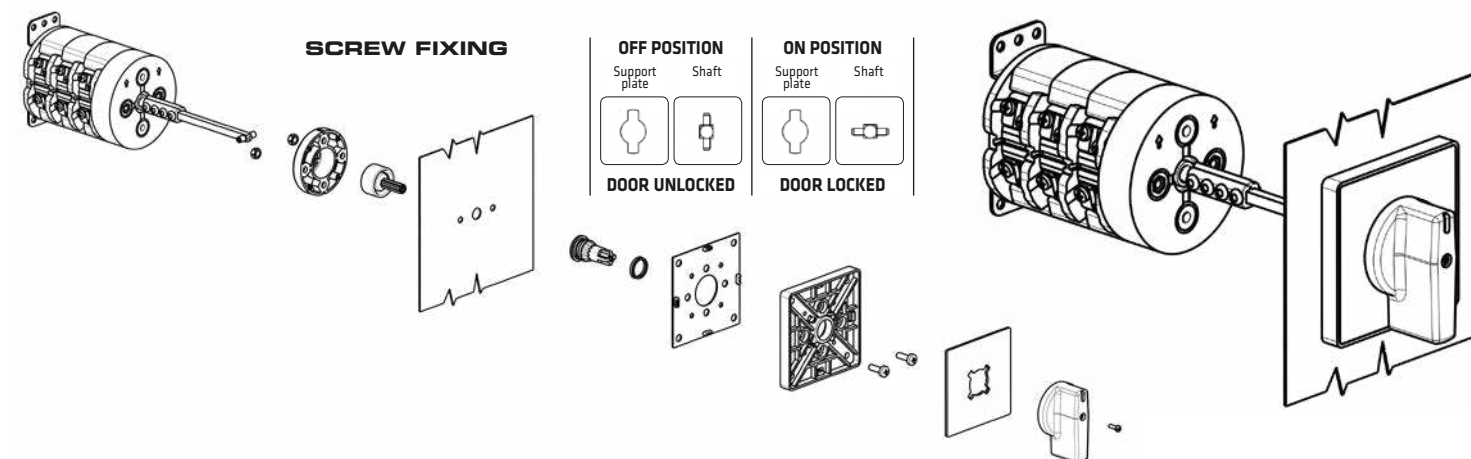
| RANGE AC21A | 25A - 32A - 40A |



| RANGE AC21A | 200A |



| RANGE AC21A | 63A - 80A |



**B**

**BASE MOUNTING**

**PROTECTION CLASS EN60529 - IP65 UL50 NEMA TYPE 1-4-4X-12**

	12-16-20A																																																																																
	25-32-40A																																																																																
	63-80A																																																																																
	125A	<table border="1"><tr><td>1</td><td>3-4</td><td></td><td>X</td></tr><tr><td></td><td>1-2</td><td></td><td>X</td></tr><tr><td>VARF</td><td>CONT.</td><td>0</td><td>1</td></tr></table>	1	3-4		X		1-2		X	VARF	CONT.	0	1	<table border="1"><tr><td>2</td><td>5-6</td><td></td><td>X</td></tr><tr><td>1</td><td>3-4</td><td></td><td>X</td></tr><tr><td></td><td>1-2</td><td></td><td>X</td></tr><tr><td>VARF</td><td>CONT.</td><td>0</td><td>1</td></tr></table>	2	5-6		X	1	3-4		X		1-2		X	VARF	CONT.	0	1	<table border="1"><tr><td>2</td><td>7-8</td><td></td><td>X</td></tr><tr><td></td><td>5-6</td><td></td><td>X</td></tr><tr><td>1</td><td>3-4</td><td></td><td>X</td></tr><tr><td></td><td>1-2</td><td></td><td>X</td></tr><tr><td>VARF</td><td>CONT.</td><td>0</td><td>1</td></tr></table>	2	7-8		X		5-6		X	1	3-4		X		1-2		X	VARF	CONT.	0	1	<table border="1"><tr><td>3</td><td>11-12</td><td></td><td>X</td></tr><tr><td></td><td>9-10</td><td></td><td>X</td></tr><tr><td>2</td><td>7-8</td><td></td><td>X</td></tr><tr><td></td><td>5-6</td><td></td><td>X</td></tr><tr><td>1</td><td>3-4</td><td></td><td>X</td></tr><tr><td></td><td>1-2</td><td></td><td>X</td></tr><tr><td>VARF</td><td>CONT.</td><td>0</td><td>1</td></tr></table>	3	11-12		X		9-10		X	2	7-8		X		5-6		X	1	3-4		X		1-2		X	VARF	CONT.	0	1
1	3-4		X																																																																														
	1-2		X																																																																														
VARF	CONT.	0	1																																																																														
2	5-6		X																																																																														
1	3-4		X																																																																														
	1-2		X																																																																														
VARF	CONT.	0	1																																																																														
2	7-8		X																																																																														
	5-6		X																																																																														
1	3-4		X																																																																														
	1-2		X																																																																														
VARF	CONT.	0	1																																																																														
3	11-12		X																																																																														
	9-10		X																																																																														
2	7-8		X																																																																														
	5-6		X																																																																														
1	3-4		X																																																																														
	1-2		X																																																																														
VARF	CONT.	0	1																																																																														
	200A																																																																																

SERIES	AC21A	1 POLE	2 POLES	3 POLES	4 POLES
P012	12A	P0120002B	P0120003B	P0120004B	P0120006B
P016	16A	P0160002B	P0160003B	P0160004B	P0160006B
P020	20A	P0200002B	P0200003B	P0200004B	P0200006B
C025	25A	C0250002B	C0250003B	C0250004B	C0250006B
C032	32A	C0320002B	C0320003B	C0320004B	C0320006B
C040	40A	C0400002B	C0400003B	C0400004B	C0400006B
C063	63A	C0630002B	C0630003B	C0630004B	C0630006B
C080	80A	C0800002B	C0800003B	C0800004B	C0800006B
G125	125A	G1250002B	G1250003B	G1250004B	G1250006B
G200	200A	G2000002B	G2000003B	G2000004B	G2000006B

ACTUATOR	FIXING	P012 - P016 - P020	C025 - C032 - C040	C063 - C080	G125	G200
	screw	020/0001	021/0001	220/0001	-	-
	ø22	095/0001	095/0001	-	-	-
	screw	030/0001	-	-	-	-
	ø22	070/0001	070/0001	-	-	-
	screw	005/0001	-	-	-	-
	ø22	077/0001	077/0001	-	-	-
	screw	006/0001	-	-	-	-
	ø22	069/0001	069/0001	-	-	-
	screw	011/0001	011/0001-A	011/0001	011/0001-A	211/0001
	ø22	063/0001	063/0001-1	063/0001	063/0001-1	211/0001-1
	screw	012/0001	012/0001-2	012/0001	012/0001-2	212/0001
	ø22	064/0001	064/0001-1	064/0001	064/0001-1	212/0001-1
<b>DOORLOCK SHAFT</b>		Metallic □5x85mm		Metallic □6x100mm		Direct doorlock coupling (no metallic shaft)

All base mounting's actuators are equipped with doorlock function that permits to open the door only in "0" position.

▲ UL50 NEMA Type 1-4-4X

▲ Metallic shaft can be cut according customer needs. Longer metallic shaft are available in accessories to page 77.

**CHANGEOVER SWITCHES 1-0-2 | TYPE B**

**ACTUATORS CHANGEOVER SWITCHES 1-0-2 | TYPE B**

**B**

**BASE MOUNTING**

**PROTECTION CLASS EN60529 - IP65 UL50 NEMA TYPE 1-4-4X-12**



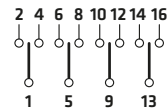
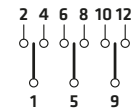
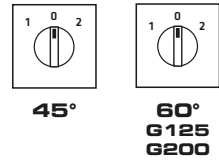
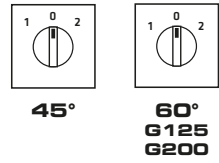
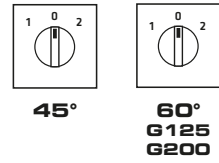
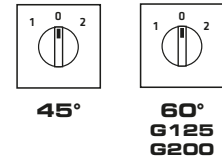
12-16-20A



25-32-40A



63-80A



1	3-4		X	
1	1-2	X		
WAF	CONT.	1	0	2

2	7-8		X	
2	5-6	X		
1	3-4		X	
1	1-2	X		
WAF	CONT.	1	0	2

3	11-12		X	
3	9-10	X		
2	7-8		X	
2	5-6	X		
1	3-4		X	
1	1-2	X		
WAF	CONT.	1	0	2

4	15-16		X	
4	13-14	X		
3	11-12		X	
3	9-10	X		
2	7-8		X	
2	5-6	X		
1	3-4		X	
1	1-2	X		
WAF	CONT.	1	0	2

ACTUATOR	FIXING	P012 P016 P020	C025 C032 C040	C063 - C080	G125	G200
		45°	45°	45°	60°	60°
	screw	020/0008	021/0008	220/0008	-	-
	ø22	095/0008	095/0008	-	-	-
	screw	030/0008	-	-	-	-
	ø22	070/0008	070/0008	-	-	-
	screw	005/0008	005/0008	-	-	-
	ø22	077/0008	077/0008	-	-	-
	screw	006/0008	006/0008	-	-	-
	ø22	069/0008	069/0008	-	-	-
	screw	011/0008	011/0008	211/0008	-	-
	ø22	063/0008	063/0008	-	-	-
	screw	012/0008	012/0008	212/0008	-	-
	ø22	064/0008	064/0008	-	-	-
<b>DOORLOCK SHAFT</b>						
		Metallic □5x85mm		Metallic □6x100mm	Direct doorlock coupling (no metallic shaft)	



All base mounting's actuators are equipped with Doorlock function that permits to open the door only in "0" position.

SERIES	AC21A	1 POLE	2 POLES	3 POLES	4 POLES
P012	12A	P0120008B	P0120009B	P0120010B	P0120011B
P016	16A	P0160008B	P0160009B	P0160010B	P0160011B
P020	20A	P0200008B	P0200009B	P0200010B	P0200011B
C025	25A	C0250008B	C0250009B	C0250010B	C0250011B
C032	32A	C0320008B	C0320009B	C0320010B	C0320011B
C040	40A	C0400008B	C0400009B	C0400010B	C0400011B
C063	63A	C0630008B	C0630009B	C0630010B	C0630011B
C080	80A	C0800008B	C0800009B	C0800010B	C0800011B
G125	125A	-	-	-	-
G200	200A	-	-	-	-

▲ UL50 NEMA Type 1-4-4X

▲ Metallic shaft can be cut according customer needs. Longer metallic shaft are available in accessories to page 77.

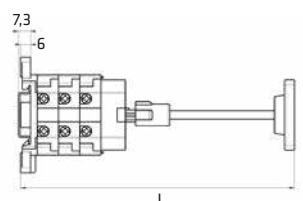
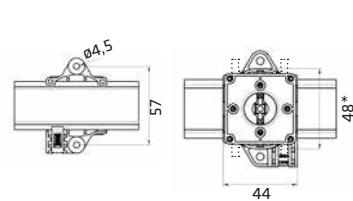


**B**

**BASE MOUNTING | ACTUATORS SCREW FIXING**



12-16-20A



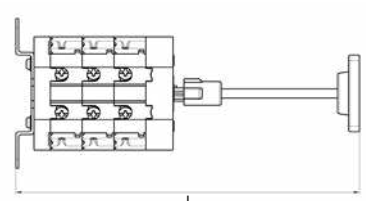
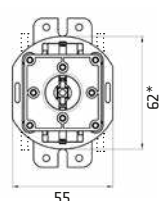
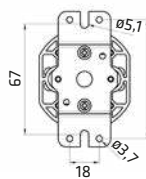
WAFER GAP	L x WAFER N°						
	1	2	3	4	5	6	
12,7	min*	80,4	93,1	105,8	118,5	131,2	143,9
	max	138,4	151,1	163,8	176,5	189,2	201,9

\* Minimum length with cut shaft.

\* If cam switch is provided of external bridge (wafer to wafer) the height will be increased of ~ 2 mm for the lower and upper sides.



25-32-40A



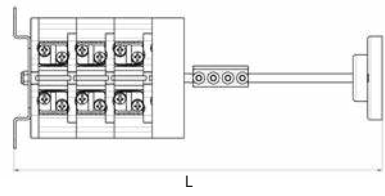
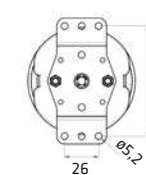
WAFER GAP	L x WAFER N°						
	1	2	3	4	5	6	
17,5	min*	96	113,5	131	148,5	166	183,5
	max	154	171,5	189	206,5	224	241,5

\* Minimum length with cut shaft.

\* If cam switch is provided of external bridge (wafer to wafer) the height will be increased of ~ 1 mm for the lower and upper sides.



63-80A

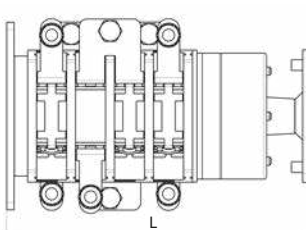
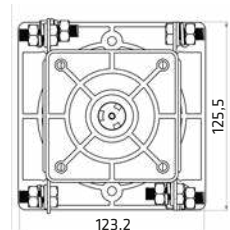
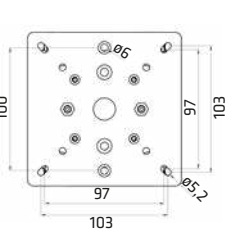


WAFER GAP	L x WAFER N°						
	1	2	3	4	5	6	
26	min*	148	174	200	226	252	278
	max	196	222	248	274	300	326

\* Minimum length with cut shaft.



125A

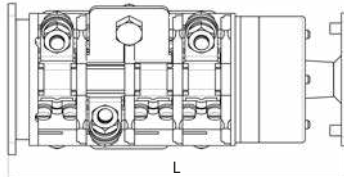
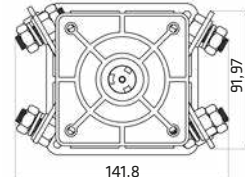
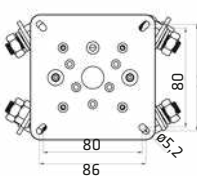


WAFER GAP	L x WAFER N°						
	1	2	3	4	5	6	
26	min*	125	151	177	203	229	255
	max						

\* Direct doorlock coupling bloccoporta (no metallic shaft).

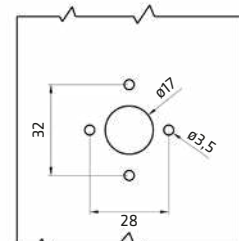


200A



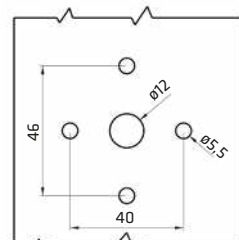
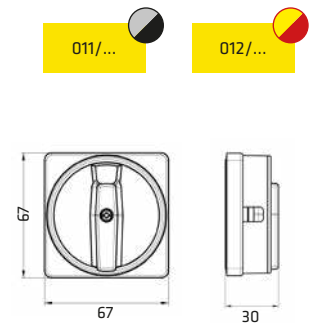
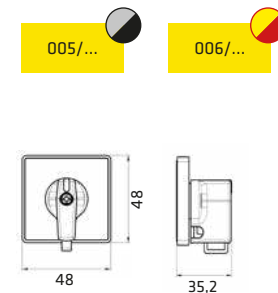
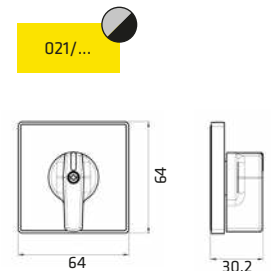
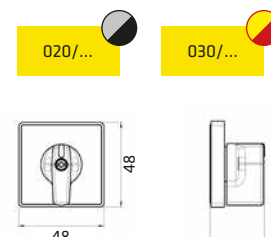
WAFER GAP	L x WAFER N°						
	1	2	3	4	5	6	
32	min*	131	163	195	227	259	291
	max						

\* Direct doorlock coupling bloccoporta (no metallic shaft).



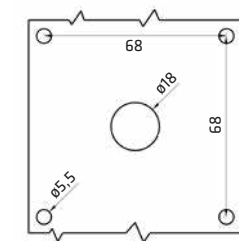
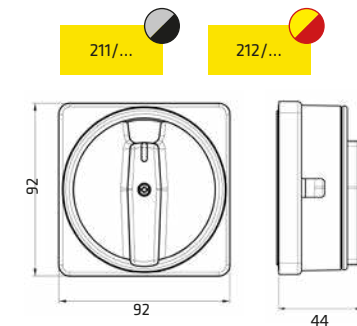
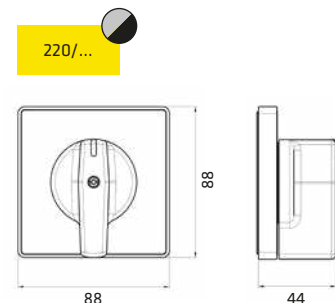
FIXING:  
Screwplast 28 or 32 mm

THICKNESS: 1...4 mm



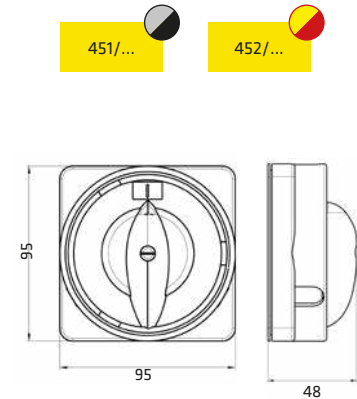
FIXING:  
Screwplast 40 or 46 mm

THICKNESS: 1...10 mm

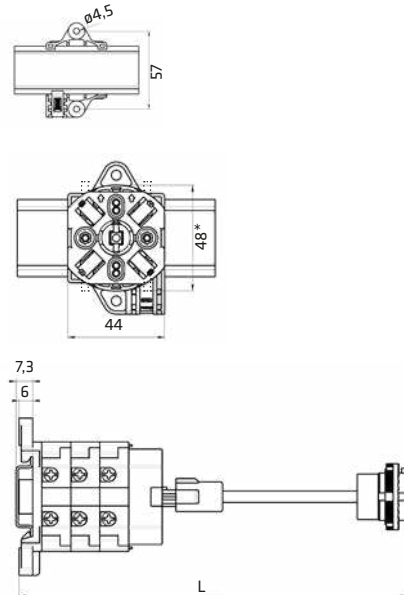


FIXING:  
M5 bolt □68 mm

THICKNESS: 3...5 mm



12-16-20A

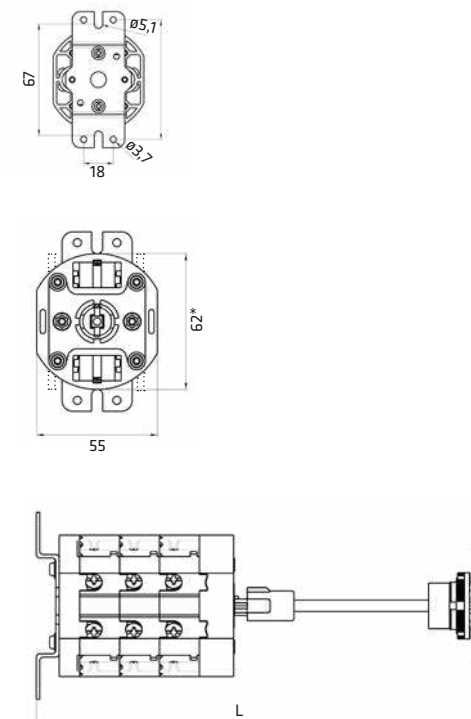


WAFER GAP	PANEL THICKNESS	L x WAFER N°						
		1	2	3	4	5	6	
12,7	1 mm	min*	84,2	96,9	109,6	122,3	135	147,7
		max	143,7	156,4	169,1	181,8	194,5	207,2
	2 mm	min*	83,2	95,9	108,6	121,3	134	146,7
		max	142,7	155,4	168,1	180,8	193,5	206,2
	3 mm	min*	82,2	94,9	107,6	120,3	133	145,7
		max	141,7	154,4	167,1	179,8	192,5	205,2
4 mm	min*	81,2	93,9	106,6	119,3	132	144,7	
	max	140,7	153,4	166,1	178,8	191,5	204,2	
5 mm	min*	80,2	92,9	105,6	118,3	131	143,7	
	max	139,7	152,4	165,1	177,8	190,5	203,2	
6 mm	min*	78,2	91,9	104,6	117,3	130	142,7	
	max	138,7	151,4	164,1	176,8	189,5	202,2	

\* Minimum length with cut shaft.

\* If cam switch is provided of external bridge (wafer to wafer) the height will be increased of ~ 2 mm for the lower and upper sides.

25-32-40A



WAFER GAP	PANEL THICKNESS	L x WAFER N°						
		1	2	3	4	5	6	
17,5	1 mm	min*	93,8	115,8	133,3	150,8	168,3	185,8
		max	157,8	175,3	192,8	210,3	227,8	245,3
	2 mm	min*	97,3	114,8	132,3	149,8	167,3	184,8
		max	156,8	174,3	191,8	209,3	226,8	244,3
	3 mm	min*	96,3	113,8	131,3	148,8	166,3	183,8
		max	155,8	173,3	190,8	208,3	225,8	243,3
4 mm	min*	95,3	112,8	130,3	147,8	165,3	182,8	
	max	154,8	172,3	189,8	207,3	224,8	242,3	
5 mm	min*	94,3	111,8	129,3	146,8	164,3	181,8	
	max	153,8	171,8	188,8	206,3	223,8	241,3	
6 mm	min*	93,3	110,8	128,3	145,8	163,3	180,8	
	max	152,8	170,3	187,8	205,3	222,8	240,3	

\* Minimum length with cut shaft.

\* If cam switch is provided of external bridge (wafer to wafer) the height will be increased of ~ 1 mm for the lower and upper sides.

